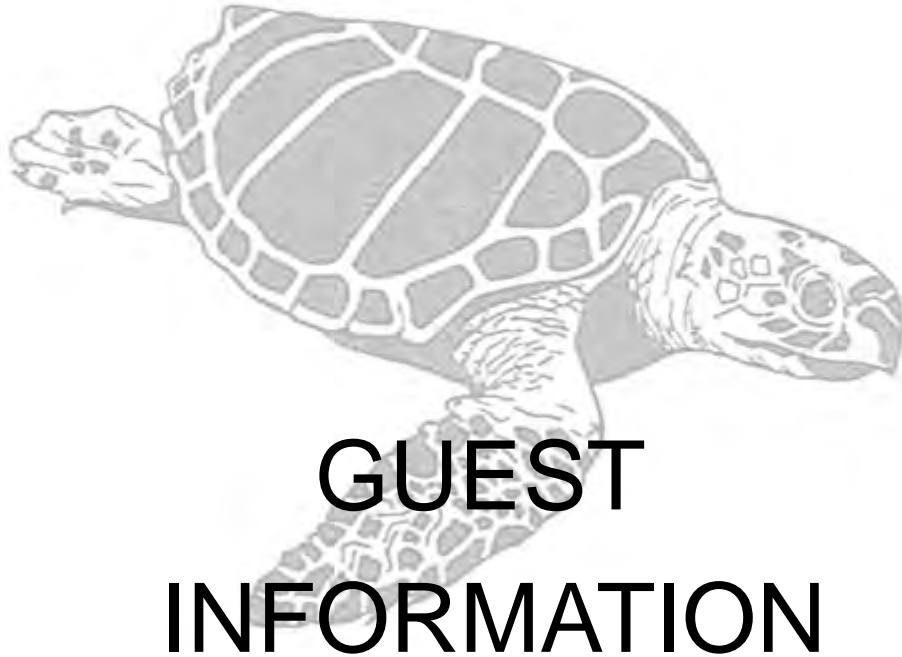




RELEASE AND UNWIND

Vero Beach

1221 Marina Village Circle
Vero Beach, FL 32967



Scan this QR code to view
the Guest Information Packet online



Toll Free: 1-888-LOGGER2

Direct: 772-770-4470 | Fax: 772-770-4578




RELEASE AND UNWIND

Directions to Loggerhead Club & Marina® – Vero Beach

By Water: (VHF Channel # 16)






 You can access Loggerhead Club & Marina - Vero Beach by water via the Indian River Lagoon

By Land:

 From the north, You can access Loggerhead Club & Marina - Vero Beach by land from I-95 by exiting at SR 60 East and proceeding east on SR 60 until it intersects with Indian River Blvd. Turn left on Indian River Blvd. and proceed about 3 miles to the main entrance to Grand Harbor Estates. Enter Grand Harbor at the main gate and ask for directions to the marina. For added convenience, call the marina at 772-770-4470 and ask for gate clearance to be called in.

Marina Information



Dock/Rack Layout

-  The Vero Beach location has a total of 126 wet slips that can accommodate boats up to 75 feet in length
-  This location does not have any dry storage
-  A Dock: Numbering Starts on the west side of the dock with A1 closest to shore and continues consecutively to A33 at the north end of the dock. The east side starts with A34 closest to shore and continues with A63 being the northern most slip.
-  B Dock: Numbering starts on the west side of the dock with B1 and continues consecutively to B20 at the north end of the dock. The east side starts with B22 and continues to B29 at the north end. The long side tie is for guest boaters.
-  C Dock: Numbering starts on the east side of the dock with C1 and continues consecutively to C18 on the south end of the dock. On the west side numbering starts with C19 and continues to C37 on the south end.

Marine Fuel

 ValvTect marine specific 90 octane non ethanol gasoline and ValvTect marine grade diesel


On- Site Utilities

-  There is free pump-out service available to all Loggerhead members. Please contact the harbor master or marina office to arrange pump-out service.
-  Additionally, water and both 30 and 50 amp service are available at all slips.




RELEASE AND UNWIND


Marina Depth

 Currently, the channel depth is 6 feet at low tide with a 6 inch tide.

In the Event of an After-Hours Emergency

 The marina office phones are forwarded nightly to an answering service. The service will contact the harbormaster or another Loggerhead Club & Marina official in the event of an emergency. If the incident involves an injury or the law is being broken, please dial 911. A call to the marina office will also be appreciated (772) 770-4470. VHF Channel #16

Local Fixed Bridges

 There is a fixed bridge about 5 miles to the north, and two fixed bridges and a drawbridge to the south. The two fixed bridges are the SR 60 Bridge, about 2 miles south, and the 17th Street Bridge, about 3 miles south, and both are 65 feet. The drawbridge is the North Fort Pierce Bridge, about 13 miles south, and it is on demand.

In the Area:

Airports

Melbourne International Airport	1 Air Terminal Pkwy # 220, Melbourne, FL	(321) 723-6227
Vero Beach Airport	3400 Cherokee Dr, Vero Beach, FL	(772) 978-4930
Palm Beach International Airport	Palm Beach International Airport 1000 Turnage Boulevard West Palm Beach, FL 33406	(561) 471-7420
Orlando Airport	1 Airport Blvd, Orlando, FL	(813) 380-4255

Bait & Tackle

Vero Tackle and Marina	3321 Bridge Plaza Dr, Vero Beach, FL 32963	(772) 234-9585
------------------------	--	----------------

Banks

Seacoast National Bank	3730 7th Ter Ste 102, Vero Beach, FL	(772) 562-0958
Bank of America	700 Beachland Blvd, Vero Beach, FL	(772) 234-4070



RELEASE AND UNWIND

Drugstores

CVS	2500 53rd St, Vero Beach, FL	(772) 564-6110
-----	------------------------------	----------------

Entertainment

Majestic 11 Movie Theatre	940 14th Ln, Vero Beach, FL	(772) 770-0774
McKee Botanical Garden	350 US Highway 1, Vero Beach, FL	(772) 794-0601
Vero Beach Museum of Art	3001 Riverside Dr. Vero Beach	(772) 231-0707
US Navy Seal Museum	A1A North of Ft. Pierce	(772) 595-5845
Public Library	1600 21st Vero Beach	(772) 770-5060
Harbor Branch Oceanographic Research Center		(772) 465-2400

Golf and Tennis

Sandridge Golf Club	5300 73rd Street, Vero Beach, FL 32967	(772) 770-5000
Vista Plantation	48 Plantation Dr. Vero Beach	(772) 569-2223

Grocery Stores

Publix – Pharmacy	415 21st St, Vero Beach, FL	(772) 562-0541
Publix	1255 US Highway 1, Vero Beach, FL	(772) 778-1984

Health Care

Indian River Medical Center	1000 36th St, Vero Beach, FL	(772) 567-4311
Sebastian River Medical Center	13695 US Highway 1, Sebastian, FL 32958	(772) 589-3186
Planet Pet Animal Hospital	2190 45th St Unit 103, Vero Beach, FL	(772) 562-4040

Health Clubs

Jungle Club	1060 6th Ave	(772) 567-1400
-------------	--------------	----------------

Hotels

Holiday Inn- Oceanside	3384 Ocean Drive, Vero Beach, FL 32963	(772) 231-2300
Springhill Suites Vero Beach	5115 Indian River Blvd, Vero Beach, FL	(772) 978-9292
The Driftwood	3150 Ocean Drive, Vero Beach, FL	(772) 231-0550

Toll Free: 1-888-LOGGER2

Direct: 772-770-4470 | Fax: 772-770-4578



RELEASE AND UNWIND

Liquor Stores

Central County Liquors	4580 US Highway 1, Vero Beach, FL	(772) 299-0001
ABC Wine & Spirits	500 21st St, Vero Beach, FL	(772) 567-6477

Mail & Shipping

US Post Office	5325 US Highway 1, Vero Beach, FL	(772) 770-2533
UPS Store	2046 Treasure Coast Plz Ste A, Vero Beach, FL	(772) 569-2400

Marine Sales

Exclusive Yacht Group	140 Intracoastal Pointe Drive Suite 110, Jupiter, Florida	(561) 745-2780
Vero Marine Center	12 Royal Palm Pt, Vero Beach, FL	(772) 562-7922

Marine Services

Diver Dogs		(772) 489-9088
Sea Tow		(772) 489-6565
Inlet Marina Systems	6619 NW Dragon Street, Port St. Lucie, FL 34983	(772) 979-3118
Mack Sails	3129 SE Dominica Terrace Stuart, FL 34997	(800) 428-1384
Fox Marine	4920 US Highway 1 Vero Beach, FL 32967	(772) 978-7600
Ace Marine Diesel	3300 43 rd Ave, Vero Beach, FL	(772) 564-7070
West Marine	21st Street, Vero Beach, FL	(772) 562-2166
Marine Connection Liquidators	2970 N US Highway 1, Fort Pierce, FL	(772) 465-6460

Religious Centers

St. Helen Catholic Church	2000 20th Street, Vero Beach, FL	(772) 567-5129
Temple Beth Salome of Vero Beach	365 43rd Ave, Vero Beach, FL	(772) 569-4700
First Presbyterian Church	520 Royal Palm Point, Vero Beach, FL	(772) 562-9088
First Baptist Church	2206 16th Ave, Vero Beach, FL	(772) 567-4341



RELEASE AND UNWIND

Restaurants

Ocean Grill	1050 Sexton Plaza, Vero Beach, FL 32963	(772) 231-5409
Mr. Manatee's Grill	30 Royal Palm Point	(772) 569-9151
Riverside Café	1 Beachland Blvd, Vero Beach, FL 32963	(772) 234-5550
Amalfi Grille	8 Royal Palm Pt, Vero Beach, FL 32960	(772) 564-8218
Domino's Pizza	Delivers to Marina	(772) 778-3030
Bobbie's Restaurant	3450 Ocean Dr.	(772) 231-6996

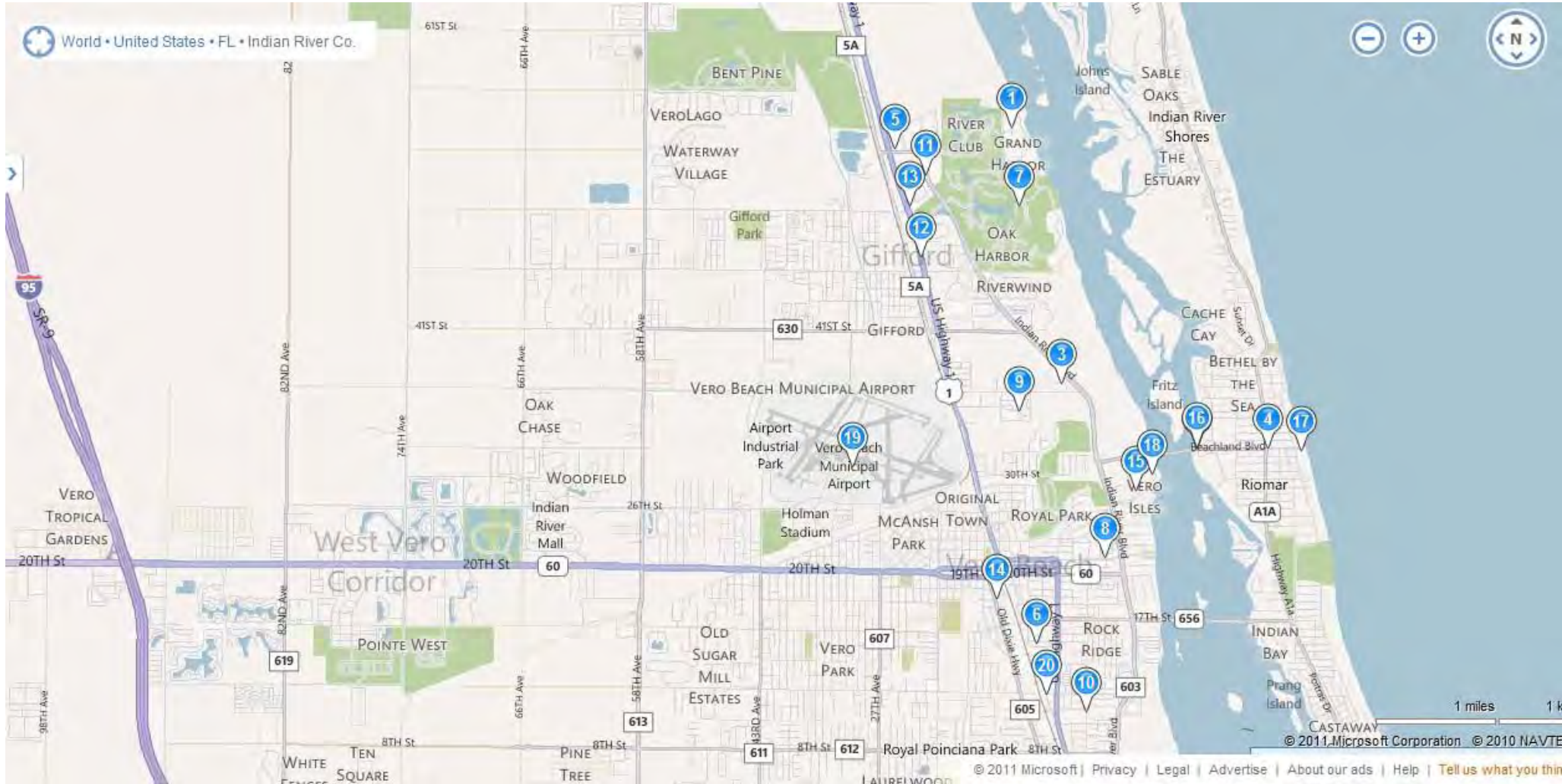
Transportation Services

Klub Kar Taxi		(772) 778-8287
Melbourne Airport Shuttle		1-800-826-4544
Hertz Rent a Car	3350 Cherokee Dr, Vero Beach, FL	(772) 562-4304
Avis Rent a Car	1006 21st St, Vero Beach, FL	(772) 567-3327
Orchid Island Rentals and Sales (Bikes)	1175 Commerce Ave, Vero Beach, FL	(772) 234-3436

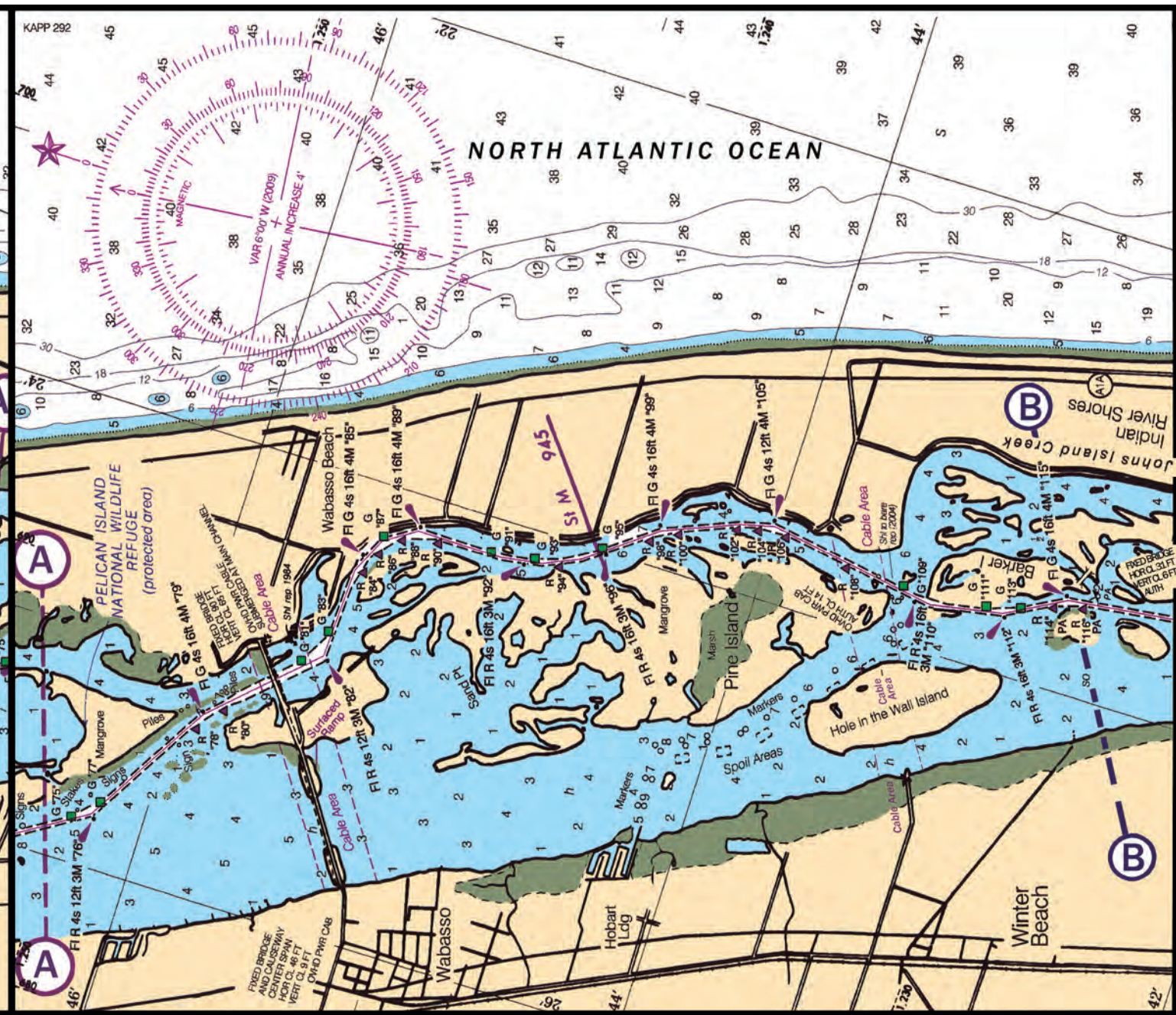
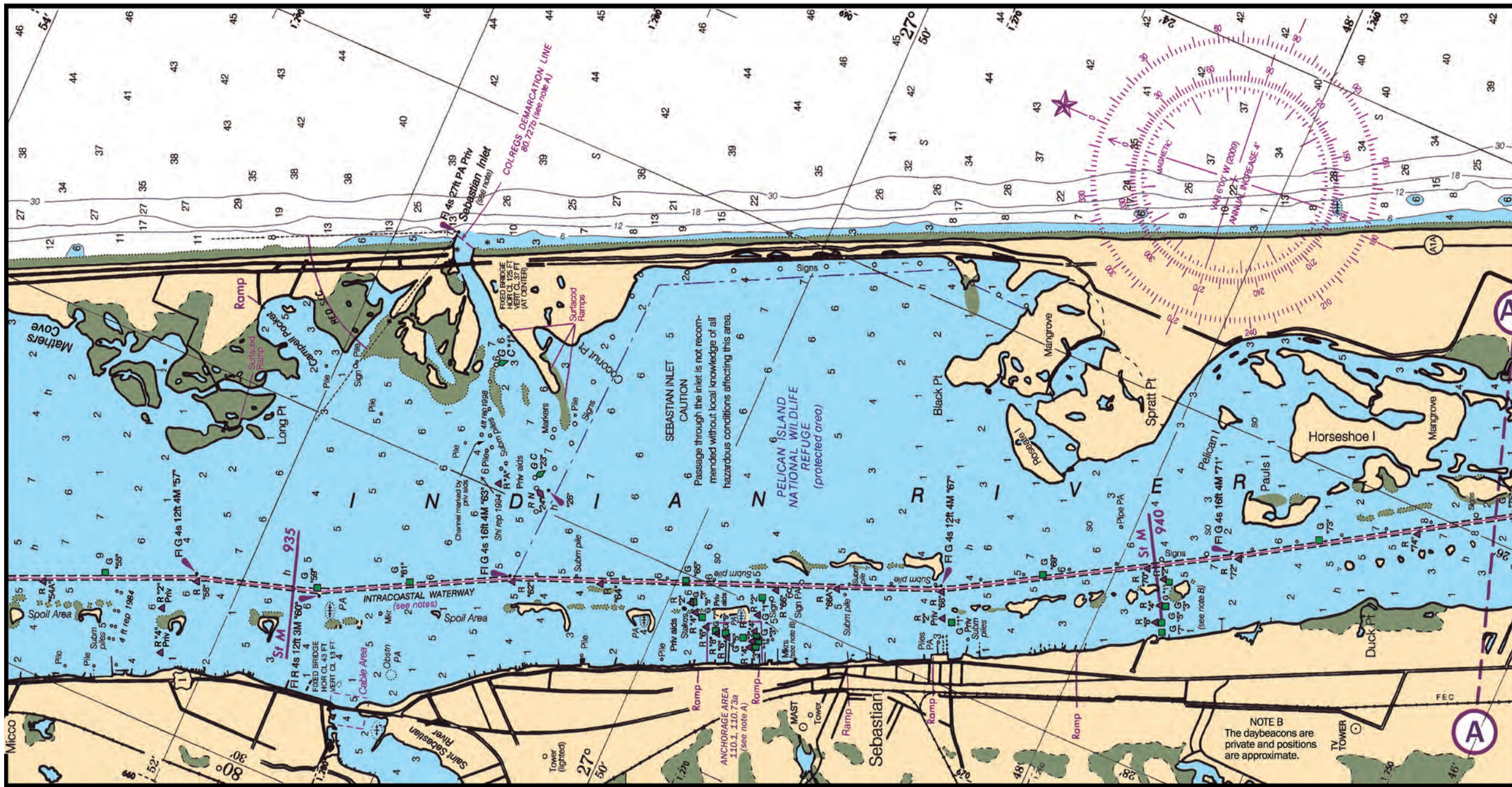
US Customs & Immigration

US Immigration and Customs Enforcement – Ft. Pierce	2990 Curtis King Blvd, Ft. Pierce, FL 34946	(800) 451-0393 (800) 432-1216 (772) 461-1733
---	---	--

Vero Beach Area Map



- | | | | |
|--|---|--|--|
| 1. Loggerhead Club and Marina
1221 Marina Village Cir, Vero, FL | 6. Majestic 11 Movie Theater
940 14th Ln, Vero Beach, FL | 11. SpringHill Suites Vero Beach
5115 Indian River Blvd, Vero, FL | 16. Riverside Cafe
3301 Bridge Plaza Dr, Vero Beach, FL |
| 2. Vero Tackle & Marina
3321 Bridge Plaza Dr, Vero Beach, FL | 7. Grand Harbor Golf Club
4985 Club Ter, Vero Beach, FL | 12. Central County Liquors Inc
4580 US Highway 1, Vero Beach, FL | 17. Ocean Grill
1050 Beachland Blvd, Vero Beach, FL |
| 3. Seacoast National Bank
3730 7th Ter Ste 102, Vero Beach, FL | 8. Publix - Pharmacy
415 21st St, Vero Beach, FL | 13. Fox Marine
4920 US Highway 1, Vero Beach, FL | 18. Amalfi Grille
8 Royal Palm Pt, Vero Beach, FL |
| 4. Bank of America
700 Beachland Blvd, Vero Beach, FL | 9. Indian River Medical Ctr
1000 36th St, Vero Beach, FL | 14. Helseth Marine Svc Inc
1784 Old Dixie Hwy, Vero Beach, FL | 19. Hertz Rent A Car
3350 Cherokee Dr, Vero Beach, FL |
| 5. CVS Pharmacy
2500 53rd St, Vero Beach, FL | 10. Jungle Club
1060 6th Ave, Vero Beach, FL | 15. Mr Manatee's Casual Grille
30 Royal Palm Pt, Vero Beach, FL | 20. Orchid Island Rentals
1175 Commerce Ave, Vero Beach, FL |



WARNING
The prudent mariner will not rely solely on any single aid to navigation, particularly on floating aids. See U.S. Coast Guard Light List and U.S. Coast Pilot for details.

RADAR REFLECTORS
Radar reflectors have been placed on many floating aids to navigation. Individual radar reflector identification on these aids has been omitted from this chart.

AIDS TO NAVIGATION
Consult U.S. Coast Guard Light List for supplemental information concerning aids to navigation.

CAUTION
Temporary changes or defects in aids to navigation are not indicated on this chart. See Local Notice to Mariners.

CAUTION
BASCULE BRIDGE CLEARANCES
For bascule bridges, whose spans do not open to a full upright or vertical position, unlimited vertical clearance is not available for the entire charted horizontal clearance.

CAUTION
Improved channels shown by broken lines are subject to shoaling, particularly at the edges.

CAUTION
Small craft should stay clear of large commercial and government vessels even if small craft have the right-of-way. All craft should avoid areas where the skin divers flag, a red square with a diagonal white stripe, is displayed.

NOTE A
Navigation regulations are published in Chapter 2, U.S. Coast Pilot 4. Additions or revisions to Chapter 2 are published in the Notice to Mariners. Information concerning the regulations may be obtained at the Office of the Commander, 7th Coast Guard District in Miami, Florida, or at the Office of the District Engineer, Corps of Engineers in Jacksonville, Florida. Refer to charted regulation section numbers.

ABBREVIATIONS (For complete list of Symbols and Abbreviations, see Chart No. 1.)
Aids to Navigation (lights are white unless otherwise indicated):

AERO aeronautical	G green	Mo morse code	R TR radio tower
Ai alternating	IO interrupted quick	N nun	Rt rotating
B black	Is isophase	OBSC obscured	s seconds
Bn beacon	LT LD lighthouse	Oc occulting	SEC sector
C can	M nautical mile	Q orange	St M statute miles
DIA diaphone	n minutes	Q quick	VQ very quick
F fixed	MICRO TR microwave tower	R red	W white
Fl flashing	Mkr marker	Ra Ref radar reflector	WHIS whistle
		R Bn radiobeacon	Y yellow

Bottom characteristics:

Bls boulders	Co coral	Gy gray	Oys oysters	so soft
bk broken	G gravel	h hard	Rk rock	Sh shells
Cy clay	Gr grass	M mud	S sand	Sy sticky

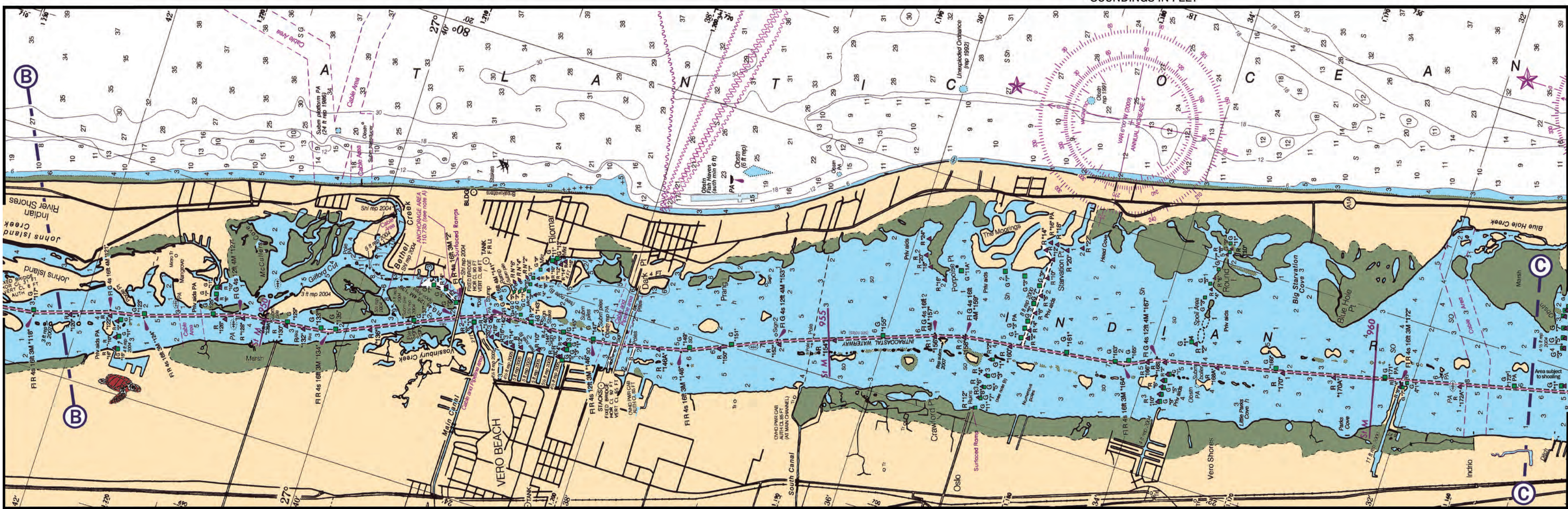
Miscellaneous:

AUTH authorized	Obstr obstruction	PD position doubtful	Subm submerged
ED existence doubtful	PA position approximate	Rep reported	

(1) Wreck, rock, obstruction, or shoal swept clear to the depth indicated.
(2) Rocks that cover and uncover, with heights in feet above datum of soundings.
COLREGS: International Regulations for Preventing Collisions at Sea, 1972.
Demarcation lines are shown thus: ---

DISCLAIMER
This chart is published and distributed by U.S. Chart Services, Inc. U.S. Chart Services, Inc. has copied, cropped and edited data from OceanGrafix charts to produce this chart. Some of the copied data is copyright protected by OceanGrafix and is used with permission. OceanGrafix makes no claims that the copied data is accurate or suitable for the intended use of the recipient or purchaser and offers no warranty concerning the chart's fitness for use. The data contained in this chart may not be reproduced in any form without written permission from U.S. Chart Services, Inc. and OceanGrafix. OceanGrafix, U.S. Chart Services, Inc., as well as advertisers and distributors of this product can not be responsible for any errors or omissions which may occur in the printing of this imaged product. All persons using this product are CAUTIONED to use the practices of good seamanship and consult Notice to Mariners when using this information.

ABBREVIATIONS
(For complete list of Symbols and Abbreviations, see Chart No. 1.)
11472 34th Ed., Jul./09
Corrected through March/10
SOUNDINGS IN FEET



LOGGERHEAD CLUB & MARINA
Vero Beach, FL
772-770-4470 ♦ Toll Free: 888-LOGGER2
www.loggerheadclubandmarina.com